

# AROUND TOWN



**1** Listen and point.



hospital



school



park



supermarket



bookstore



library



movie theater



firehouse



**2** Listen and echo.



**3** Listen and circle.  
Then sing and play.



## Rock Around the Town!

- a** Let's rock around the town today.  
We're in front of the  
bookstore / school .  
Hey, hey!  
It's next to the  
library / firehouse .  
Let's play!  
Let's rock around the town!
- b** Let's rock around the town today.  
We're across from the  
movie theater / park .  
Hey, hey!  
It's behind the  
bookstore / supermarket .  
Let's play!  
Let's rock around the town.

UNIT

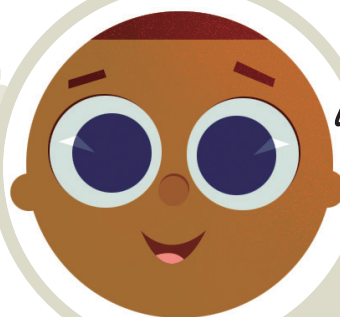
7



**4** Workbook  
Page 25

**5****Complete.**

- a We're in front of  
the school.
- b The school is \_\_\_\_\_  
the library.
- c We're \_\_\_\_\_  
the park.
- d The park is \_\_\_\_\_  
the bookstore.

**6****Ask and answer.**

What's in front  
of the park?



The school!

**7****Workbook**

Page 26

# HAPPY CAMP



**Read and listen.**



**Find and complete. Then listen and say.**

a c a f e t e r i a



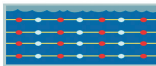
b l \_ \_ \_



c h \_ \_ l t \_ \_ \_ g e



d p \_ \_ l



e b \_ \_ \_ h \_ u \_ \_



f c \_ b \_ \_



**Workbook**

Page 27

UNIT

7





**4**

**Complete.**

**a**

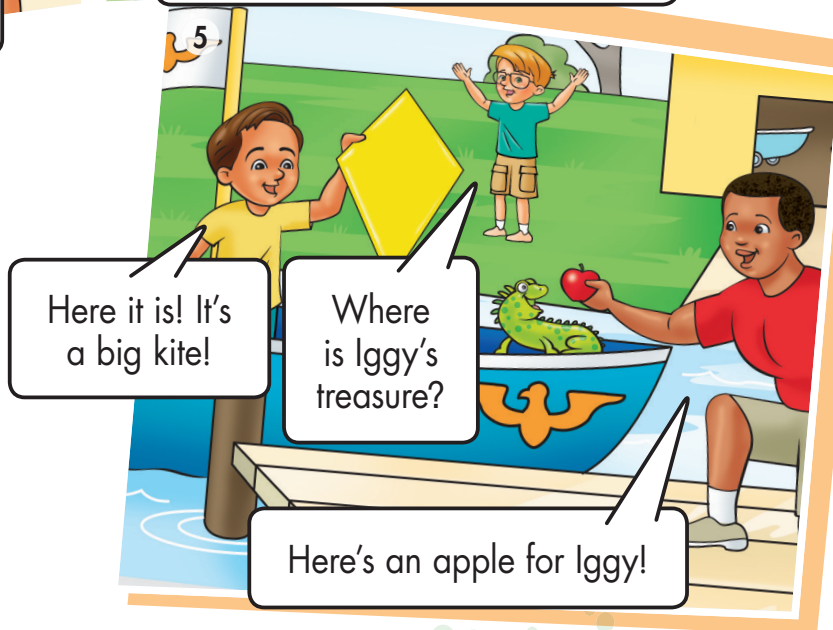
the small cabins?

**b**

the cafeteria?

**c**

lggy's treasure?



**Workbook**

Page 28

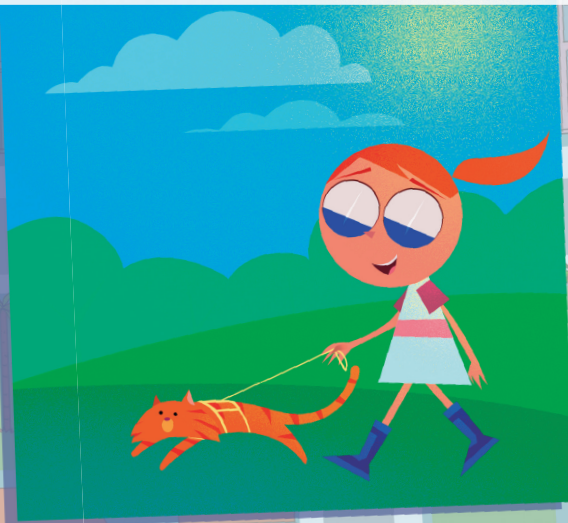


# Angel



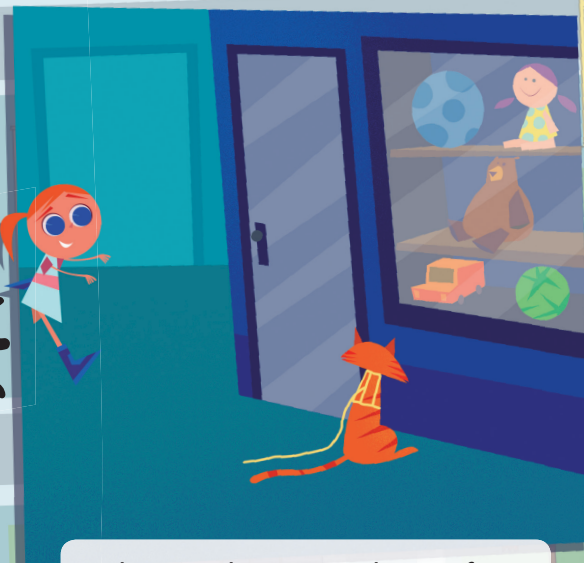
**Read and listen.**

This is Peggy. She has a kitty. How fun!  
Wait! Oh, no! Come back, Angel!  
Where is she? She's up in the tree!  
Stop! Please stop, kitty! Come back!



Where is she now? She's next to  
the bookstore.

Come back, Angel!



Where is she now? She's in front  
of the toy store. Wow!  
She likes the toys!



There she is! She's in front of the  
supermarket!

Here's your kitty, Peggy!

Thank you very much!

Oh, Angel, you got a fish? OK... Just today!

UNIT

7

**2****Circle *True* or *False*.**

- a The kitty is next to the bookstore.
- b Angel is behind a tree.
- c The little cat is in front of the toy store.
- d A fireman rescues the kitty.

**True False****True False****True False****True False****3****Read and draw.****a**

Where is the kitty?  
It's in the tree.

**b**

Where is the kitty?  
It's next to the toy car.



## Maps

1

Draw a map and a key  
of your ideal city.

SOCIAL  
STUDIES

A large rectangular box with a light gray border, intended for drawing a map. It contains faint, stylized outlines of city blocks in shades of gray and green.A rectangular box with a light gray border, intended for drawing a key.

UNIT

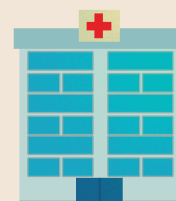
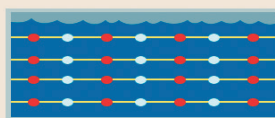
7



# ROUND UP

## 1 Complete. Then match.

- a p o o l
- b c
- c l
- d h



## 2 Look and complete.

- a Where \_\_\_\_\_ the movie theater? \_\_\_\_\_ the supermarket.
- b \_\_\_\_\_ is the hospital? \_\_\_\_\_ the movie theater.
- c \_\_\_\_\_ the park? It's \_\_\_\_\_ the supermarket.

## 3 Word Play! Find and circle the words from Unit 7 on page 72.